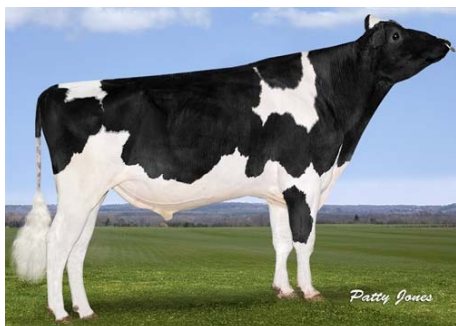


Saloon

SANDY-VALLEY SALOON

0200HO02792 IOTA x PLANET x BOLTON



REGANCREST ALTAIOTA
 SANDY-VALLEY PLANE SAPPHIRE VG-87-2YR-USA 1*
 ENSENADA TABOO PLANET
 SANDY-VALLEY BOLT SHEILA EX-92-2E-USA
 SANDY-VALLEY BOLTON
 SANDY-VALLEY FORBID SULLY VG-87-3YR-USA GMD

GTPI 2637

GP-CAN SP TD TR TL TY TV

HH1F HH2F HH3F HH4F HH5F HCDF

Reg. #: HOUSAM70358061

aAa: 213465

DMS: 126

Born: 04/09/2011

Beta Casein: A2A2

Kappa Casein: AB

PRODUCTION 906 Herds 1858 Dtrs 98% Rel

MACE-G / 12-16

Milk lbs	Fat lbs	Fat %	Protein lbs	Protein %
2498	91	-0.01	81	+0.02
NM\$ 670	CM\$ 678	FM\$ 646	GM\$ 631	DWP\$ 547

HEALTH & REPRODUCTION

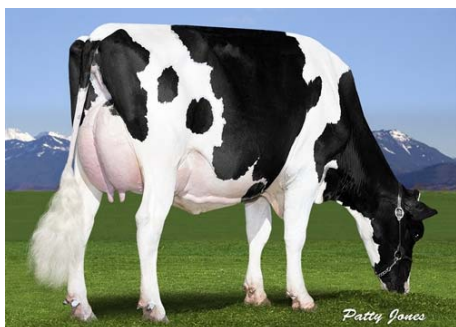
Productive Life	0.7	Sire Calving Ease	9.2%	98% Rel
Somatic Cell Score	3.02	Daughter Calving Ease	5.6%	93% Rel
Daughter Pregnancy Rate	-0.3	Sire Stillbirth	7.4%	
Fertility Index	0.0	Daughter Stillbirth	5.9%	
Feed Efficiency	199			



SANDY-VALLEY SALOON 5203



STEVAIN SALOON NOUKY



DOLPHIN SALOON 925

CONFORMATION 664 Herds 1089 Dtrs 97% Rel

MACE / 12-16

PTAT	2.92	Body Composite	1.72
Udder Composite	1.66	Dairy Composite	2.97
Feet & Legs Composite	1.56		

