

Lavanguard COMESTAR LAVANGUARD

0200HO05630 GOLDWYN x TITANIC x IGNITER



BRAEDALE GOLDWYN
 COMESTAR LAUTAMIE TITANIC VG-89-2YR-CAN 31*
 HARTLINE TITANIC
 COMESTAR LAUTELMA IGNITER VG-89-4YR-CAN 21*
 SUMMERSHADE IGNITER
 COMESTAR LAUTELLE EMERSON VG-85-2YR-CAN 2*

GTPI 1723

GP-CAN ST TL TY TV

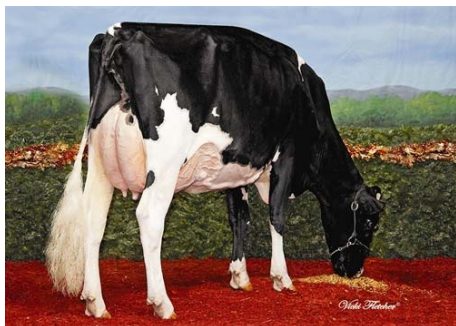
HH1F HH2F HH3F HH4F HH5F HCDC

Reg. #: HOCANM103974966 aAa: 231465 DMS: 234,123
 Born: 04/25/2006 Beta Casein: A2A2 Kappa Casein: AA

PRODUCTION 8477 Herds 25380 Dtrs 99% Rel MACE-G / 12-16
 Milk lbs Fat lbs Fat % Protein lbs Protein %
 66 17 +0.05 2 0.00
 NM\$ -5 CM\$ -8 FM\$ 0 GM\$ -30 DWP\$

HEALTH & REPRODUCTION

| | | | | |
|-------------------------|------|-----------------------|------|---------|
| Productive Life | -2.9 | Sire Calving Ease | 5.8% | 99% Rel |
| Somatic Cell Score | 3.07 | Daughter Calving Ease | 6.1% | 95% Rel |
| Daughter Pregnancy Rate | -1.9 | Sire Stillbirth | 6.6% | |
| Fertility Index | -1.9 | Daughter Stillbirth | 5.1% | |
| Feed Efficiency | 11 | | | |



PLEASANT NOOK TRINITYS TRINKET

CONFORMATION 5556 Herds 14244 Dtrs 98% Rel MACE / 12-16
 PTAT 2.03 Body Composite 0.90
 Udder Composite 1.14 Dairy Composite 2.41
 Feet & Legs Composite 1.30



VYECROFT DELLIA LAVANGUARD

