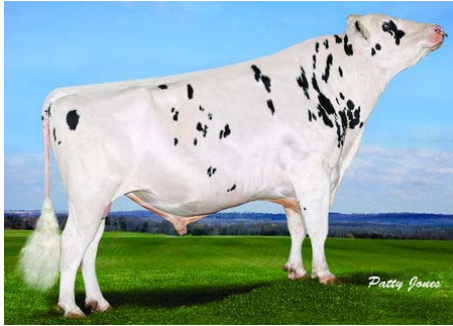


Manifold

MAINSTREAM MANIFOLD

0200HO00402 O MAN x BW MARSHALL x EMORY



O-BEE MANFRED JUSTICE
 MAINSTREAM MARSH AEROINE TL TV VG-88-3YR-USA GMD
 MARATHON BW MARSHALL
 MAINSTREAM EMORY HERSHEY EX-90-6YR-USA GMD
 MJR BLACKSTAR EMORY
 MAINSTREAM ADAN HARBOR EX-90-2E-USA

GTPI 2303

EX-93-CAN SP TD TL TY TV

HH1F HH2F HH3C HH4F HH5F HCDF

Reg. #: HOUSAM135747713

aAa: 231456

DMS: 135,345

Born: 09/26/2004

Beta Casein: A1A2

Kappa Casein: AB

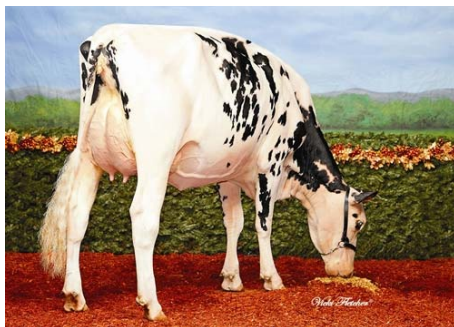
PRODUCTION					MACE-G / 12-16
8326 Herds	48876 Dtrs	99% Rel			
Milk lbs	Fat lbs	Fat %	Protein lbs	Protein %	
1521	68	+0.04	54	+0.03	
NM\$ 598	CM\$ 612	FM\$ 564	GM\$ 601	DWP\$ 706	

HEALTH & REPRODUCTION

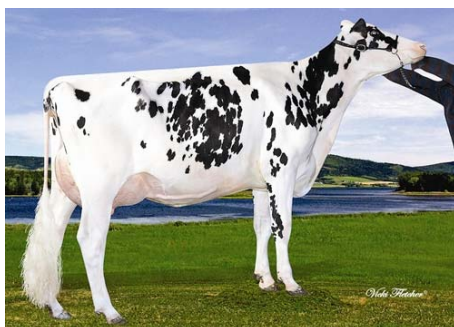
Productive Life	4.0	Sire Calving Ease	3.9%	99% Rel
Somatic Cell Score	3.00	Daughter Calving Ease	6.4%	99% Rel
Daughter Pregnancy Rate	2.6	Sire Stillbirth	5.9%	
Fertility Index	2.1	Daughter Stillbirth	8.8%	
Feed Efficiency	152			



LINDENRIGHT MANIFOLD DIME



MARYCLERC C MANIFOLD DELLIMA



LINDENRIGHT MANIFOLD DELIGHTED

CONFORMATION				MACE / 12-16
4957 Herds	21898 Dtrs	98% Rel		
PTAT	0.37	Body Composite	0.54	
Udder Composite	0.20	Dairy Composite	0.73	
Feet & Legs Composite	-0.74			

